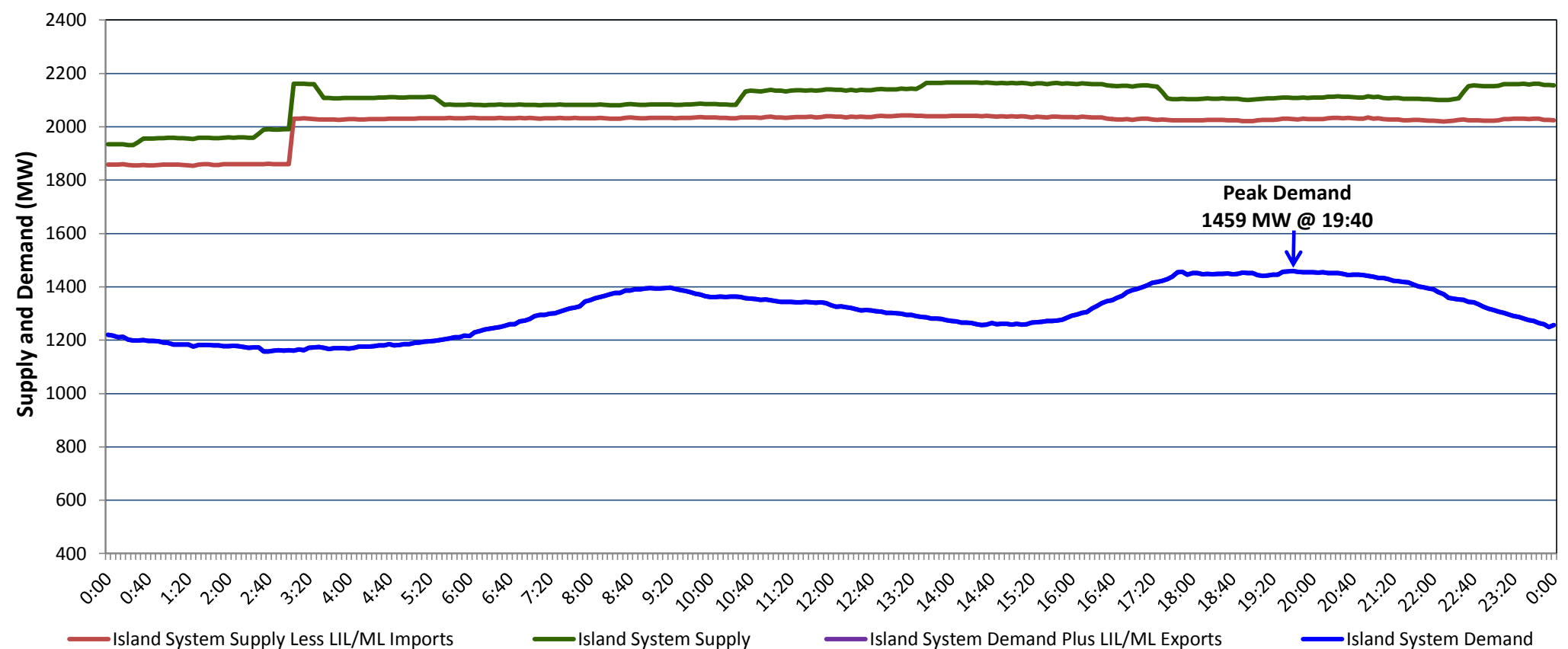


Newfoundland Labrador Hydro (NLH) Supply and Demand Status Report Filed Monday, February 10, 2020

Section 1 Island Interconnected System Supply, Demand & Exports Actual 24 Hour System Performance For Sunday, February 09, 2020



Supply Notes For February 09, 2020

1,2

A At 0301 hours, February 09, 2020, Holyrood Unit 2 available (170 MW).

Section 2 Island Interconnected Supply and Demand

Mon, Feb 10, 2020	Island System Outlook ³		Seven-Day Forecast	Temperature (°C)		Island System Daily Peak Demand (MW)	
				Morning	Evening	Forecast	Adjusted ⁷
Available Island System Supply: ⁵	2,140	MW	Monday, February 10, 2020	-7	-4	1,555	1,449
NLH Island Generation: ⁴	1,695	MW	Tuesday, February 11, 2020	-1	-3	1,380	1,276
NLH Island Power Purchases: ⁶	120	MW	Wednesday, February 12, 2020	-1	-2	1,425	1,321
Other Island Generation:	205	MW	Thursday, February 13, 2020	-5	-2	1,455	1,350
ML/LIL Imports:	120	MW	Friday, February 14, 2020	-8	-10	1,550	1,444
Current St. John's Temperature & Windchill: -7 °C	-15	°C	Saturday, February 15, 2020	-12	-10	1,530	1,424
7-Day Island Peak Demand Forecast:	1,555	MW	Sunday, February 16, 2020	-7	-3	1,400	1,296

Supply Notes For February 10, 2020

3

- Notes:
1. Generation outages for running and corrective maintenance are included. These are not unusual for power system operations. They generally do not impact customer supply. The power system operators schedule outages to system equipment whenever possible to coincide with periods when customer demands are low and sufficient supply reserves are available. However, from time to time equipment outages are necessary and reserves may be impacted.
 2. Due to the Island system having no synchronous connections to the larger North American grid, when there is a sudden loss of large generating units there may be a requirement for some customer's load to be interrupted for short periods to bring generation output equal to customer demand. This automatic action of power system protection, referred to as under frequency load shedding (UFLS), is necessary to ensure the integrity and reliability of system equipment. Under frequency events have typically occurred 5 to 8 times per year on the Island Interconnected System and the resultant customer load interruptions are generally less than 30 minutes. With the activation of the Maritime Link frequency controller during the winter of 2018, UFLS events have occurred less frequently.
 3. As of 0800 Hours.
 4. Gross output including station service at Holyrood (24.5 MW) and improved NLH hydraulic output due to water levels (35 MW).
 5. Gross output from all Island sources (including Note 4).
 6. NLH Island Power Purchases include: CBPP Co-Gen, Nalcor Exploits, Rattle Brook, Star Lake, Wind Generation and capacity assistance (when applicable).
 7. Adjusted for curtailable load, market activities and the impact of voltage reduction when applicable.

Section 3 Island Peak Demand Information Previous Day Actual Peak and Current Day Forecast Peak

Sun, Feb 09, 2020	Actual Island Peak Demand ⁸	19:40	1,459 MW
Mon, Feb 10, 2020	Forecast Island Peak Demand		1,555 MW

Notes: 8. Island Demand / LIL / ML Exports (where applicable) is supplied by NLH generation and purchases, plus generation owned and operated by Newfoundland Power and Corner Brook Pulp & Paper (Deer Lake Power, DLP).